

SEPARATOR

SE
60



FALCON



Highest purity
of end products



Easy to operate



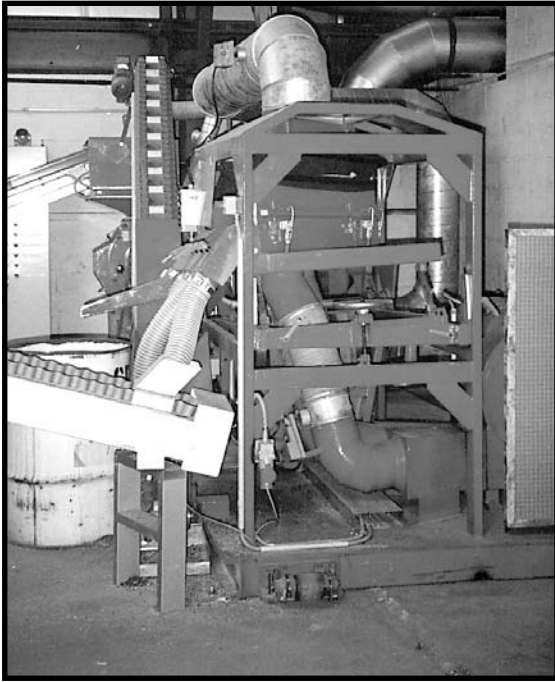
Dust-free operation



Absolute minimum
of spare parts

SYSTEM
REDOMA[®]
SWEDEN

Leading Manufacturer of Cable Recycling Plants Worldwide.



The "Falcon" – separating the useful from the useless.

Technical Specification

Length.....	1600 mm
Width	1300 mm
Height	2150 mm
Screen area	60 dm ²
Floor space for separator and blower	2400 x 1600 mm
Motor for eccentric drive	0.75 kW
Motor for blower	4 kW
Weight	700 kg
Capacity for mixed copper cable	0.9 t/h
Max. capacity (power cable)	2.2 t/h

With reservation for technical alterations.



Front side of the separator with six outlets.



Cable recycling plant FIREFOX with Separator SE 60.



Close-up of the outlets.



Maximum purity of end products. "From Cable to Cash."



Separator SE60 "FALCON"

The Separator SE60 ("FALCON") forms the central part of a SYSTEM REDOMA® cable recycling plant, separating the granulated cable into its two components: metal and insulation.

The separator employs the air sifting principle, i.e. separation is achieved by using the difference between the density and the size of the particles. The vertical air flow and the vibrating movement of the separating screen causes the granules to "float" partially and to move in different directions on the screen.

The right setting of the separator table for optimum result depends on the correct interaction between three variables, namely the eccentric speed, the air flow, as well as the longitudinal inclination. All variables can be adjusted during operation. The eccentric speed and the air streams are adjusted by potentiometers.

The separator deck, which is easily and quickly replaced, is covered with a stainless steel screen. Under-pressure in the air extraction hood warrants dustfree operation. Above

the deck a deflector is installed in order to get a very high degree of purity of the metal, usually above 99%.

The SE60 is extremely reliable in operation - and requires very few spare parts. This machine, however, cannot separate lead from copper; special equipment for this purpose is available from SYSTEM REDOMA®.

Like the sharp eyes of a falcon, our separator discerns and discriminates the useful from the useless.

SYSTEM
REDOMA[®]
S W E D E N

For more information, please contact: