

# GRANULATOR

GR  
45



PANTHER



**Very robust  
and reliable**



**Easy access to  
knives and screen**



**Wear-resistant  
design**



**Can be installed in  
various combinations**



**Never any dirt  
in the bearings**



**The Panther -  
pouncing on its prey**

SYSTEM  
**REDOMA**<sup>®</sup>  
SWEDEN

**Leading Manufacturer of Cable Recycling Plants Worldwide.**



Granulator GR 45 (left) as part of a FIREFOX Cable Recycling Plant.

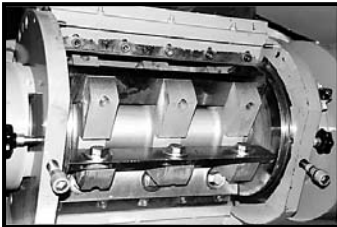
## Technical Specification

### MODEL GR 45-660

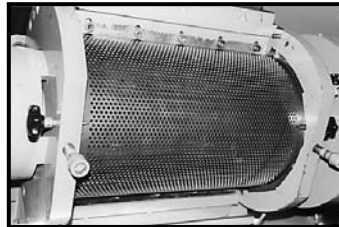
Floor area .....	1200 x 1200	mm
Height .....	variable 2200 - 3000	mm
Rotor length .....	660	mm
Cutting circle diameter.....	350	mm
Rotor speed .....	500	r/m
No. of rotor knives.....	10	pcs
No. of fixed knives.....	2	pcs
No. of rotor knife rows.....	5	pcs
No. of fixed knife rows.....	2	pcs
Motor .....	45	kW
Weight .....	1.75	t

Transmission: V-belt

*With reservation for technical alterations.*



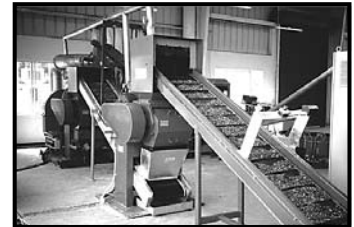
Rotor with knives.



Detailed view of screen.



Rear side view.



Granulator with transport equipment.



## Granulator GR 45-660 "PANTHER"

The Granulator GR 45 ("PANTHER") is designed for small and medium-size plants, such as the POWERCAT and FIREFOX as well as for larger REDOMA cable recycling plant.

Built for tough performance, it has proven its high quality and sturdiness in operations all over the world.

The machine is mounted on a steel base plate and does not require any special foundation. Depending on capacity and your requirements, the Granulator GR 45 can be installed in various combinations – single, in-line and even as a pair mounted on the same base plate.

The machine design is simple, robust and easy to service. The granulator housing is partly reinforced with hardened steel plates and equipped with an exchangeable wear bar.

The rotor knives are pre-adjusted outside the machine in a special jig, which makes the replacement of knives very quick and simple.

This granulator is also suitable for processing solid plastics, but not for sheet.

*The "PANTHER" – always ready to pounce on its prey!*

SYSTEM  
**REDOMA**<sup>®</sup>  
SWEDEN

For more information, please contact:

Manufactured by: **Retech Recycling Technology AB, Jägersrovägen 219, 21377 Malmö, Sweden**  
Telephone +46 40-312230    Telefax +46 40-312239    [www.redoma.com](http://www.redoma.com)    [info@redoma.com](mailto:info@redoma.com)